



प्रादेशिक मौसम केंद्र, कोलाबा, मुंबई  
Regional Meteorological Centre, Mumbai

Dated: 21 July 2025

Time of issue: 1200 hrs

**IMPACT BASED FORECAST FOR HEAVY RAINFALL OVER MUMBAI**

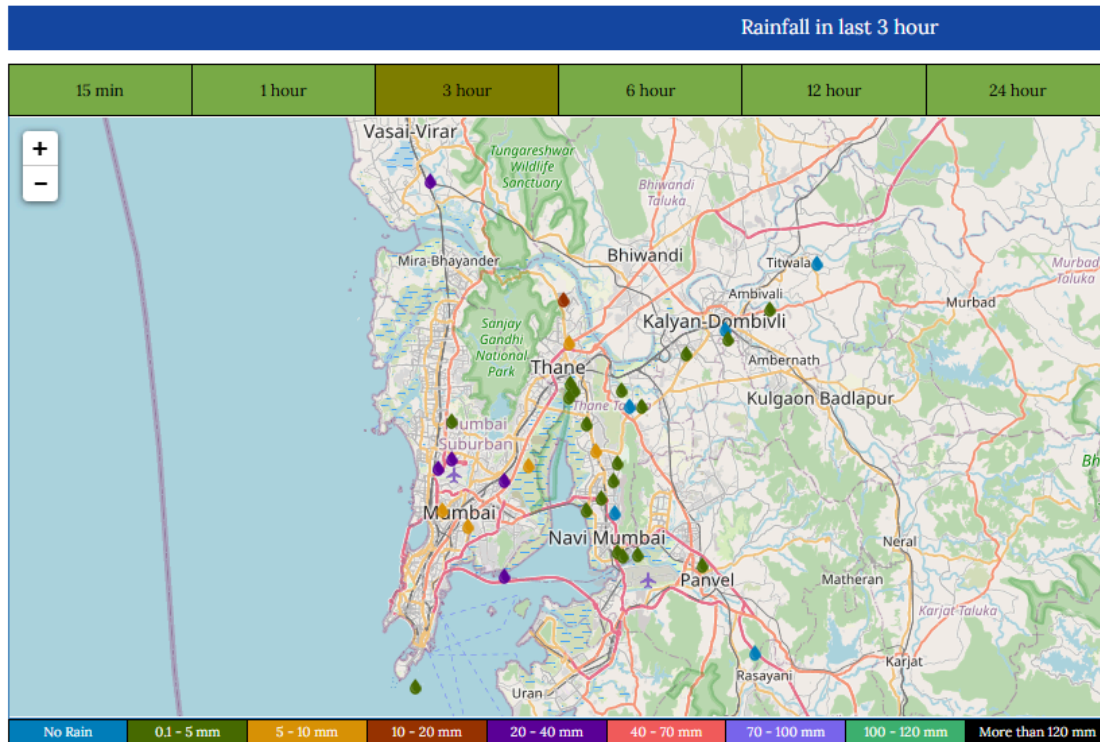
**Updates of Ongoing Heavy Rainfall Event**

Rainfall Realised from 0830 hrs IST to 1130 hrs IST of 21st July 2025	Mumbai City and Suburbs experienced moderate to intense spells of rain past 3 hrs. (Map attached)  Colaba– 1.2 mm, Santacruz- 71.8 mm, Juhu Airport -65.0 mm, Vikhroli 18.0.mm, Chembur 23 mm, Ram_ Mandir 37.5mm , Dahisar – 11.5 mm.
Nowcast Warning for next 2-3 hrs	As per latest observations, Mumbai city and suburbs are very likely to experience moderate rain with occasional intense spells of rainfall during next 2-3 hours with possibility of gusty winds reaching 40-50 kmph.
Warning for 24 hours  (from 0830 hrs of the day to 0830 hrs of next day)	Heavy rain in the city and suburbs with possibility of heavy to very heavy rain at isolated places. Possibility of occasional gusty winds reaching 40 to 50 kmph.
Impact Expected	<ul style="list-style-type: none"><li>• Water logging/inundation in most parts of low-lying areas and river-banks</li><li>• Disruption to road, rail, air and ferry transport.</li><li>• Major roads and local trains affected.</li><li>• Possibility of flash floods coinciding with high tide.</li><li>• Local disruption of municipal services (Water, electricity etc.)</li><li>• Possibility of danger to very old buildings and unmaintained structures.</li><li>• Occasional gusty winds with speed reaching 40 kmph-50 kmph gusting to 60 kmph along and off the coast resulting in possibilities of damage to vulnerable /temporary structures.</li><li>• Rough Sea conditions along the coast.</li></ul>

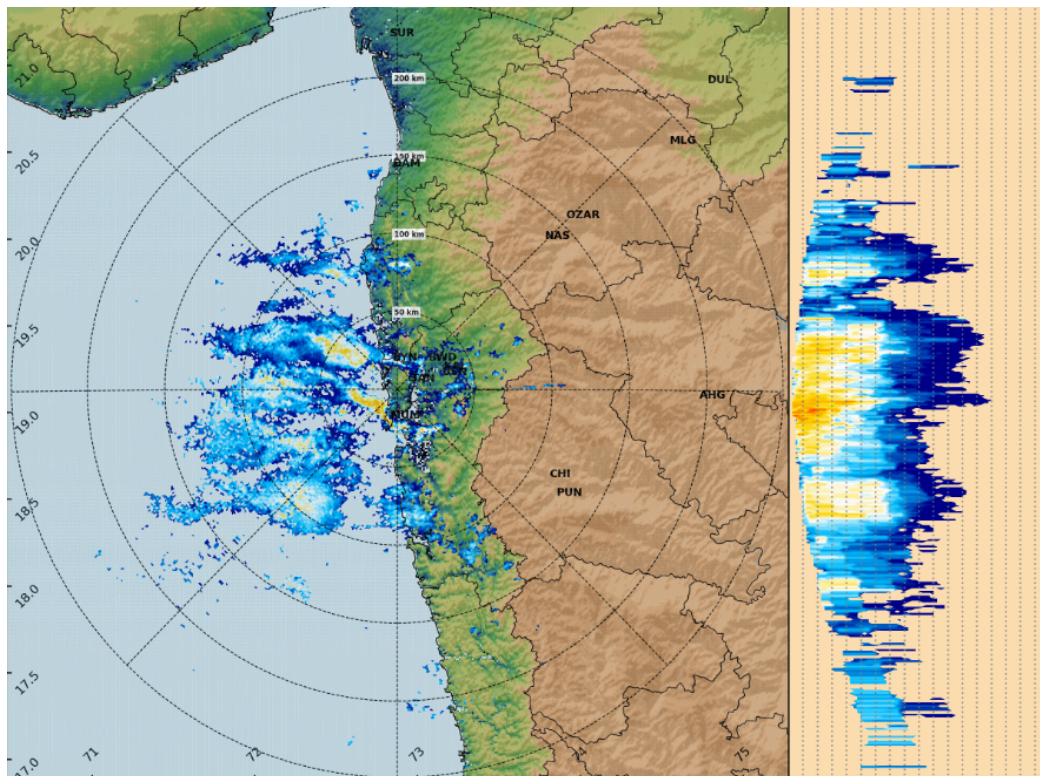
COLOR CODES

Very Low	No action
Low	Be updated
Medium	Be prepared
High	Take Action

Rainfall realised during next 3 hours:

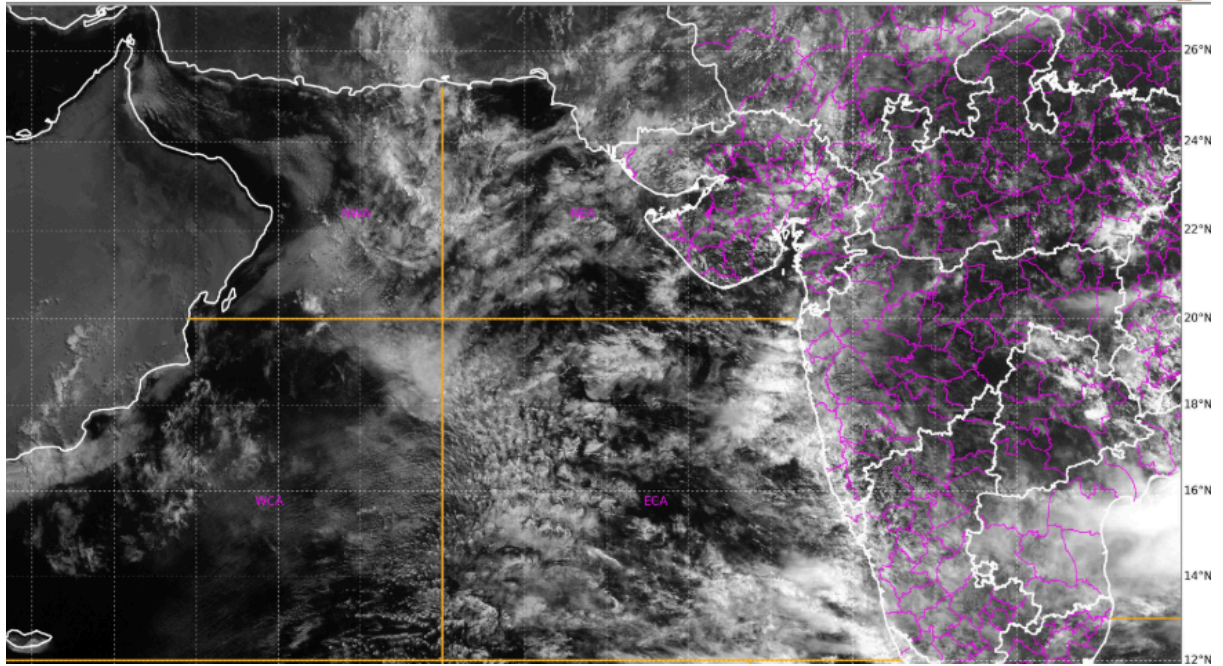


Current radar image:



Current satellite image:

21-07-2025/(0515 to 0542) GMT  
21-07-2025/(1045 to 1112) IST



#### Legends:

Rainfall Intensity			
Terminology	Rainfall Range	Terminology	Rainfall Range
Light Spell	1 cm /hr	Very Intense Spell	3-5 cm/hr
Moderate Spell	1-2 cm/hr	Extremely Intense Spell	5-10 cm/hr
Intense Spell	2-3 cm/hr	Cloud Burst	>10 cm/hr

Rainfall Categories			
Terminology	Rainfall (in mm)	Terminology	Rainfall (in mm)
Very Light Rainfall	Trace- 2.4	Heavy Rainfall	64.5-115.5
Light Rainfall	2.5-15.5	Very Heavy Rainfall	115.6-204.4
Moderate Rainfall	15.6-64.4	Extremely Heavy Rainfall	>=204.5

Regional Weather Forecasting Centre

RMC Mumbai

Phone: [+91 022 22150431](tel:+9102222150431)/[22174719](tel:+9102222174719)/[22174735](tel:+9102222174735)